

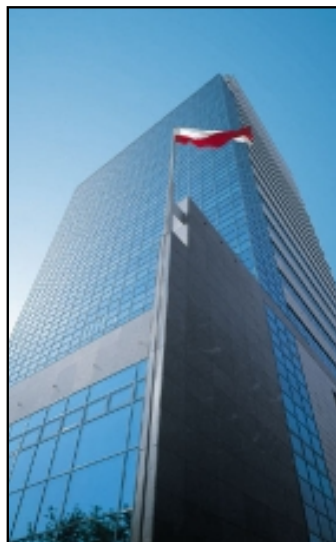
- POLIEDRA 50 PHOTOVOLTAIC CURTAIN WALLS

Poliedra 50 Photovoltaic system is part of the evolution programme of the Metra Poliedra 50 system for the building industry and enables to plan curtain walls to meet the most demanding engineers', builders' and final consumers' requirements, aiming at optimizing the energetic, architectural and environmental features of the aluminium-photovoltaic integrated system.



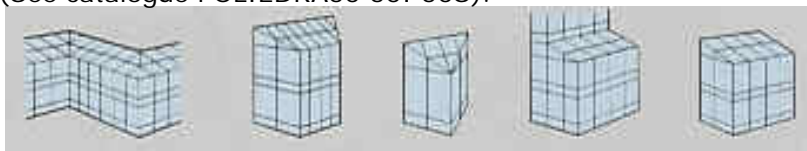
- APPLICATION -

The system is based on the photovoltaic process turning the sun radiation into electric energy. Thanks to its features Poliedra 50 Photovoltaic system can be used in all the building situations, both existing and still in project, perfectly integrating in any environmental setting.



- ALUMINIUM SYSTEM TECHNICAL DESCRIPTION -

(See catalogue POLIEDRA50 50I 50S).

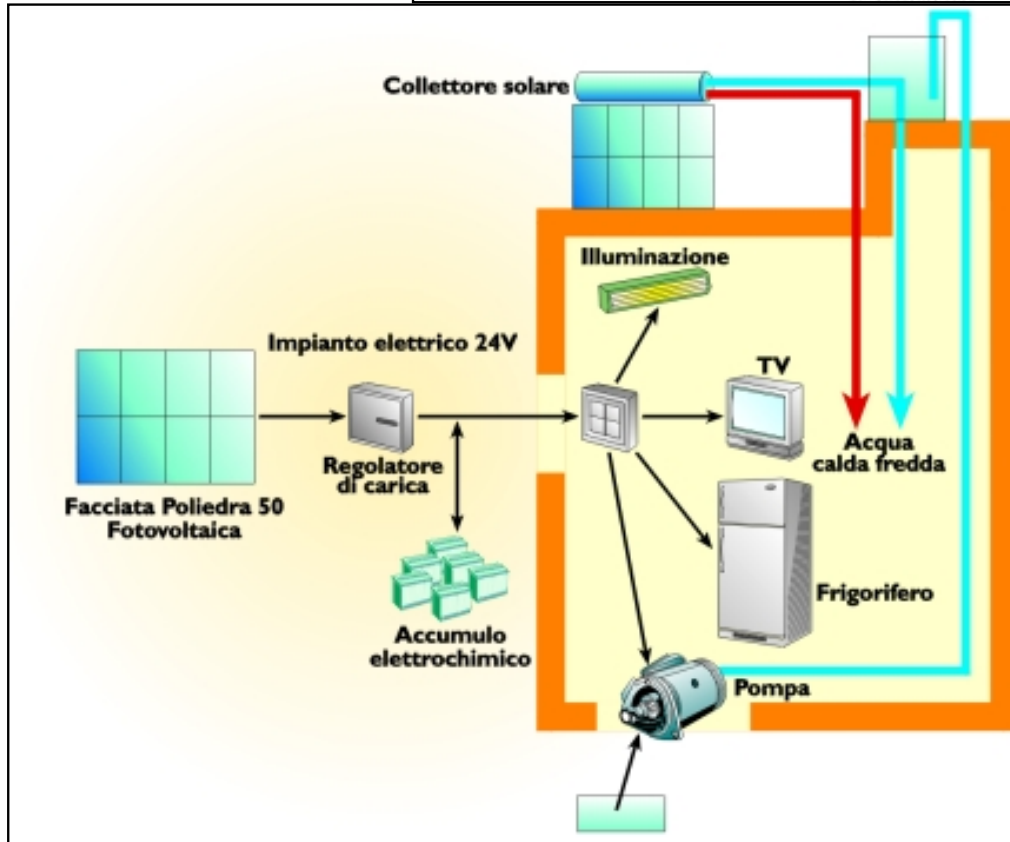
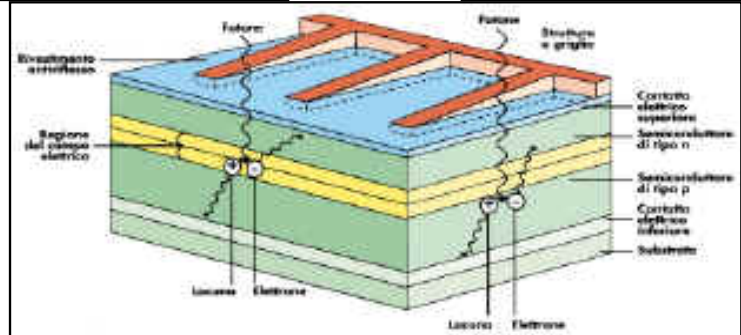
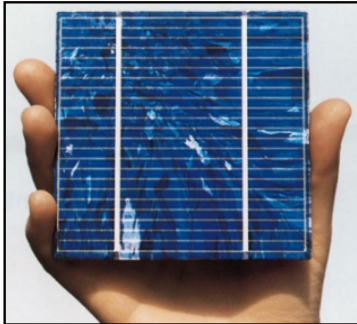
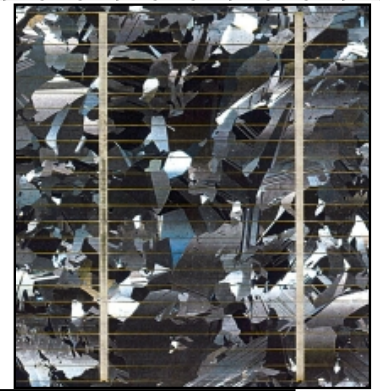


- PHOTOVOLTAIC PANELS TECHNICAL DESCRIPTION-

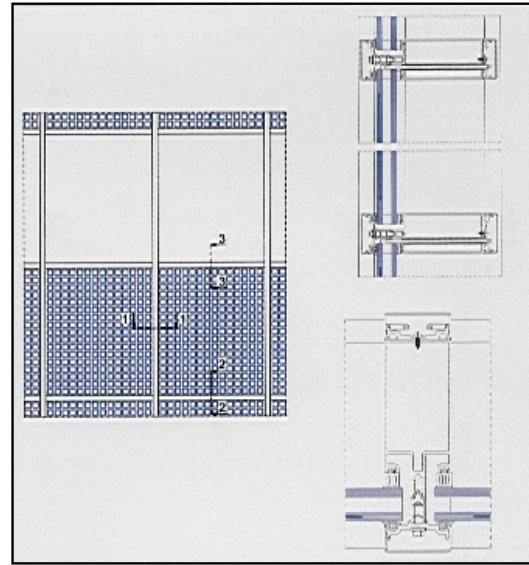
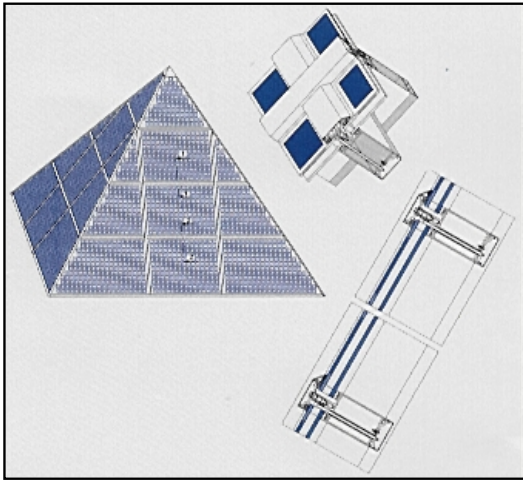
The panels are made up of silicium cells with a size of 125x125x0,35 mm. They are series or parallel connected, according to the power required. An output of 120 watts can be reached with a single panel.

- The cells used for the panels can be:
 - Monocrystalline with a 14,5% average efficiency.
 - Multicrystalline with a 12% average efficiency.

• The panel finishings are:
Bright blue, green, black or ochre.
(see the picture).



- MAIN FEATURES -



Poliedra 50 Photovoltaic system is a clean energy source with the lowest environmental impact, as its use does not generate any kind of emission, neither polluting nor acoustic. All this, combined with an easy use, the modularity and the reduced maintenance work, enables to make aluminium structures which are among the most complex and efficient available nowadays on the market.

SURFACE FINISHING