

TECHNOLOGY IN MOTION



MACO
ESPAGS
ESPAGNOLETTES



One for all ...





MACH II – One for all ...

The technology behind our fittings allows all of these possibilities in one single programme. Simply: one for all . . .



Fittings that, fulfil all your window requirements!

One for all ...



SECURE

- You want secure windows ...
- that have central locking cams
 - that have a mushroom and shootbolt corner combination
 - that exceed the requirements of BS7950:1997



FUNCTIONAL

- You want functional windows ...
- that are easy to operate
 - that are simple to adjust
 - that will make your windows stand out from the rest



FAST

- You want fast and efficient fabrication ...
- of the striker plates onto the frame
 - with fittings that do not require cropping to size
 - that clip into the eurogroove



COMPATIBLE

- You want fittings that ...
- fully locate into the eurogroove
 - are manufactured specifically for your profile system
 - that are reliable in use





Secure

The issue of a windows burglar resistance gains more prominence every day. You need to be able to produce windows that are both reliable and secure.



Operation

By engaging two central mushroom cams either side of a single striker plate, when the locking point is put under load during an attempted break in, or testing to BS7950, the load is dispersed evenly on the striker plate which prevents it from twisting and stops the locking points from disengaging.

MACH II Shootbolt Espagnolette . . .

**. . . the most advanced way of securing a window.
. . . creates satisfied customers putting you one step ahead of the competition.**



- Central mushroom cams tested to 8,7Kn, almost three times more than the requirements of BS7950:1997.
- MACH II meets all the requirements of BS7950:1997.
- Two central mushroom cams.
- Adjustable shootbolt throw 10-13 mm
- Interlocking shootbolt and mushroom strikes.
- Steel cover plate.

The MACH II shootbolt espagnolette . . .



. . . has been designed to give years of customer satisfaction through a reliable function

- Secure steel cover plate.
- 360 hours salt spray corrosion resistance.
- Improved screw positions so that they pick up the reinforcing.
- Small routing detail maintains strength in the profile.
- 19 mm cam travel ensures maximum engagement into the striker plate.
- Sintered steel spindle follower and drive wheels ensure strength and durability.
- Manufactured under BS ISO 9001.

Stabilizing plates

(only required on some profile systems) helps to increase the strength of the corners.





Functional

The window fittings will enable you to produce good looking windows whilst enhancing the overall performance. Your customers will know that they are getting the best available window technology.



Versatile

The MACH II shootbolt espagnolette has been developed with versatility in mind. This easily enables the production of a wide range of window styles.



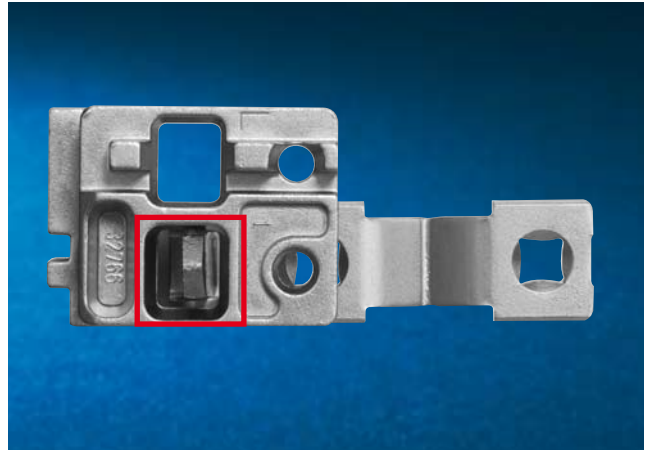
The MACH II enables the production of the following windows styles:

- Double side hung casement window
- Tall top hung windows with round the corner locking
- Low handle height for disabled access or hard to reach windows



Simple and easy

Windows fitted with the MACH II shootbolt espagnolette are simple and easy to operate. The smooth operation is achieved by the use of adjustable mushroom cams to close the window. The end shootbolts are passive and only come into contact with the shootbolt strike when the window is attacked.



Striker plates

All MACO striker plates incorporate a night vent position to allow airflow into occupied rooms. For security reasons it is not recommended that windows are left in the night vent position when the house is unoccupied.

A slimline striker plate design results in optically pleasing sight lines when the window is open.

Adjustable

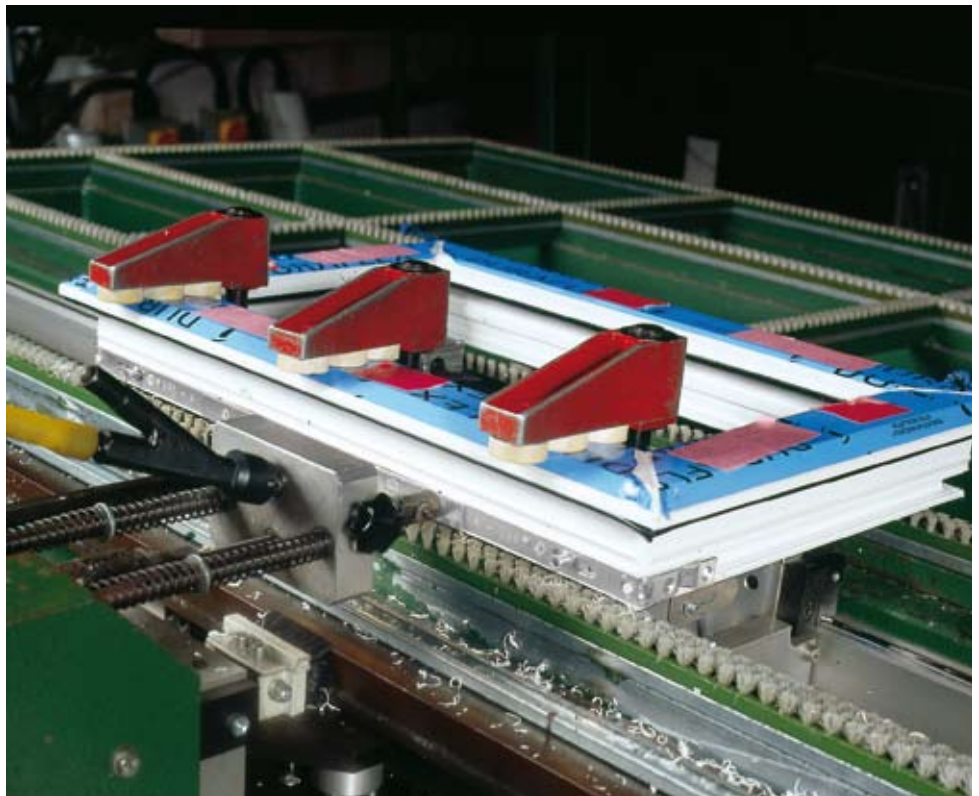
All mushroom cams are adjustable for compression by plus or minus 1 mm. This enables the weather performance capabilities to be maintained for many years to come.





Fast

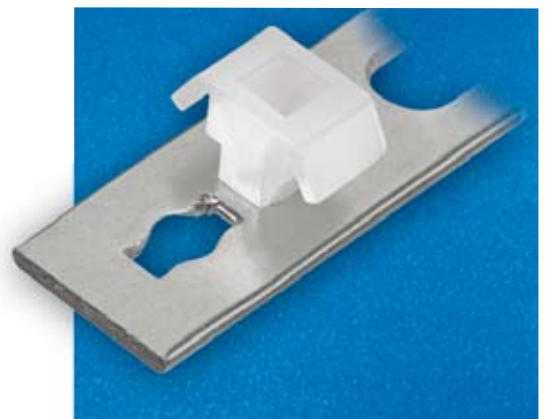
In an ever changing market new window fabrication methods are constantly being developed. As methods improve, the installation of the hardware has to be able to keep up with the pace change.



“Click-Fix“- Eurogroove clips

Click-Fix

- Hold extensions in the eurogroove
- Speeds up production
- No special components required
- Helps automatic assembly machines
- Helps when assembling by hand





Efficient – economical – individual!



Rapid-Fix - non crop extensions

- No need to crop extensions to size
- 50 mm adjustment per extension
- Size increases in 100 mm increments
- 9 Rapid-Fix extensions for SRS 500 - 1400 mm



Rapid-Fix extension partially enclosed

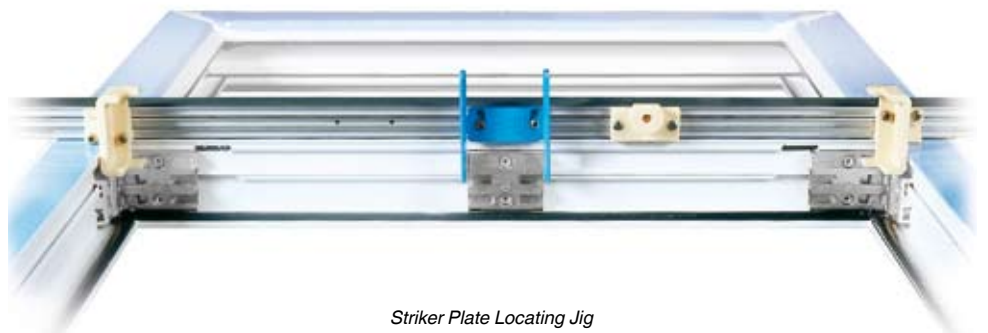


Rapid-Fix extension fully enclosed

The MACH II shootbolt espagnolettes are also available with Std-Fix croppable extensions. The Std-Fix version has all the features of the Rapid-Fix but requires the extensions to be cut to size with a pneumatic cropping machine.

Rapid assembly of striker plates

- The mushroom and shootbolt striker plates combine to form the end strikers that are located into the corners of the frame
- A mushroom striker plate is located in the centre of the frame
- For faster assembly a locating jig is available for positioning the centre mushroom strike



Striker Plate Locating Jig



Compatible

You need to ensure that your fittings will operate smoothly and are fully compatible with your window system.



- Fully locates into the eurogroove
- Available in 20 & 22 mm backset
- Lockcase depth only 7 mm more than the backset
- 12 mm wide lockcase
- 63 mm long routing detail
- Works with the same striker plate and routing detail as inline espagnolettes

The MACH II shootbolt espagnolette has been designed for profile systems with a eurogroove depth of 9 mm.

This ensures that the MACH II lockcase is fully supported within the eurogroove and that the connecting shoes are supported by the base of the profile, making the assembly quicker, simpler and more secure.

With a lockcase width of 12 mm and an overall depth of only 7 mm more than the backset, this virtually eliminates the possibility of the lockcase breaking into the glazing area.

Different backsets (20 & 22 mm) coupled with two mushroom heights (7.7 & 9.0 mm) along with bespoke striker plates ensures that correct manufacturing tolerances are achieved.



Dedicated striker plates are designed to suit ...



... individual profile systems

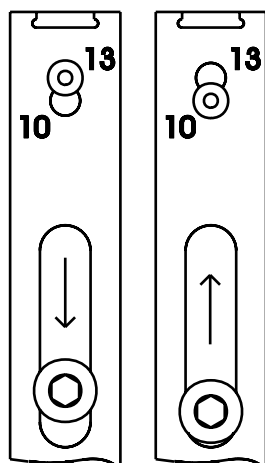


All MACO striker plates are developed in conjunction with the systems extrusion companies, this guarantees that they are an exact fit.

By developing our striker plates this way we are able to maximize the strength and security of the windows as we can position the screw fixings so that they pick up screw ports and reinforcing.

To adjust the shootbolt throw from 10-13 mm, move the mushroom cam so that the plastic pin locates into the desired position.

This should be done before either cropping the extension to size, or locating the extension into the rapid-fix drive gear.



**MACO
ESPAGS**



MAYER & CO BESCHLÄGE GMBH

ALPENSTRASSE 173
A-5020 SALZBURG
TEL +43 (0)662 6196-0
FAX +43 (0)662 6196-1449
maco@maco.at
www.maco.at

**MACO DOOR & WINDOW
HARDWARE (U.K.) LTD**

EUROLINK INDUSTRIAL CENTRE
CASTLE ROAD, SITTINGBOURNE
KENT ME10 3LY
TEL +44 (0)1795 433900
FAX +44 (0)1795 433901
maco@macouk.net
www.macouk.net