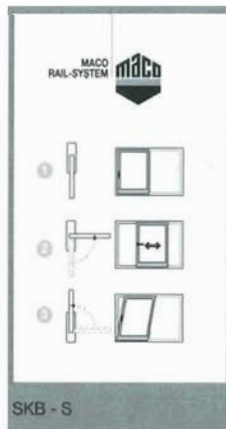


## Product liability advice

- Your windows / balcony-doors have been equipped with high-quality Tilt&Slide fittings. The operation is straightforward and trouble-free; nevertheless you should read through these instructions carefully and adhere to the operation advice.  
In your own interest; please do not forget to read the safety and neglect instructions!
- Keep these operation and maintenance instructions safe in case needed and also inform other users of the instructions contents.
- Check as to whether an operation sticker has been applied to the window or if one is necessary.
- In order to ensure that your windows are operational for years to come, please adhere to the operation and maintenance instructions!

## Operation

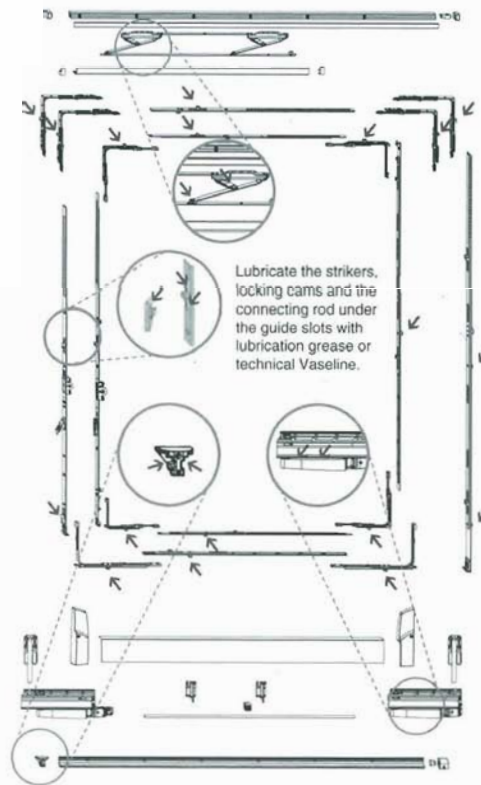
- 1 Close
- 2 Open/slide
- 3 Tilt



## Maintenance

In order to maintain the operability of the Tilt&Slide fittings (T&S 'SKB') for windows and balcony-doors, the following maintenance work is to be carried out at least once a year:

- Security relevant fittings components are to be examined at regular intervals for wear and tear.
- All movable parts and locking points of the Tilt&Slide fittings are to be greased. ✓
- Only cleaning and maintenance agents, which do not damage the corrosion protection of the fittings components, are to be used.



## MACO RAIL-SYSTEMS SLIDING FITTINGS



Operation and maintenance  
instructions  
Tilt&Slide fittings

T&S  
Standard version

## Safety and neglect instructions

Risk of injury (e.g. catching one's finger or other body-parts) in the opening gap between the sash and frame!



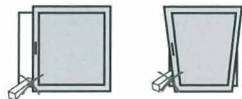
Risk of falling out!



Refrain from applying an additional load to the sash.



Refrain from inserting any obstacles in the opening gap between the sash and frame!



## General advice for your windows

A good window can do more than just let in air and light:

It is an aesthetical element and at the same time, a component that must fulfil high technical requirements.

Apart from the important care of the fittings components, you should also constantly check the surface, the glazing, and the gaskets, and immediately repair defective areas.

Use only soapy water for cleaning purposes; no corrosive cleaning agents!

Do not paint over the fittings!

## Adjustments on the window

These fittings adjustments as well as unhinging & hinging the sashes are to be carried out exclusively by a specialist company.

**MULTI-TREND**  
Adjusting the sash lifter: Loosen the screw with a Torx-15 bit, set the height, and tighten the screw



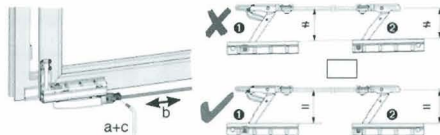
**MULTI-MATIC**  
Adjusting the sash lifter: Set to the required height by turning the adjusting screw with a Torx-15 bit



Should mishandling occur despite the device: Press the sash lifter; the handle can then be moved into every desired position.

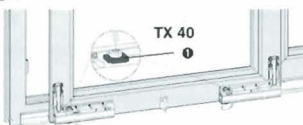
### Correcting the parallel positioning of the rollers

- Loosen the connecting rod on the handle-sided roller
- Position the rear roller ② parallel to the handle-sided roller ① by moving the connecting rod to the left or to the right
- Firmly secure the connecting rod



### Adjusting the roller height

- Remove the adjustment safeguard ①
- Adjust the height (+ 4 mm, - 2 mm)
- Replace the adjustment safeguard



### Correcting the sash's point of entry



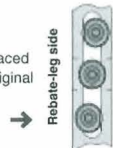
### Gasket-compression



Less gasket-compression

This position with the flat surface faced towards the eccentric cam is the original position.

More gasket-compression



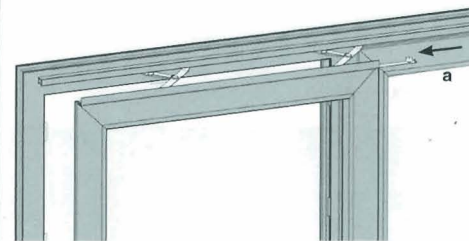
Rebate-leg slide

i.S. cam

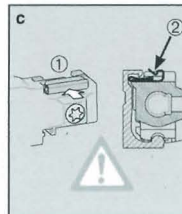
Locking cam

## Hinging the sash

The following must be carried out very carefully by a specialist company, as the installation is no longer in the hardware manufacturer's sphere of influence!



- Slide in the hinge-sided scissor-slider into the cover strip (scissor stay) as far as it will go.
- Screw the locking-screw tightly with a Torx 25 bit.
- Activate the anti-jemmy ① device! Push back the anti-jemmy device on both rollers, until they click into place in the marked position ②.



**PLEASE NOTE:** If the anti-jemmy device doesn't correctly click into place or doesn't click in at all at the marked position, the sash is not sufficiently safeguarded. This can result in grievous bodily harm.

We strongly recommend window and door buyers, to have their windows and doors installed by authorised specialists.

The same care and maintenance instructions are valid for all window types that are not specifically mentioned in these instructions (e.g. Tilt&Slide windows; diagram C)!

MAYER & CO BESCHLÄGE GMBH  
ALPENSTRASSE 173  
A-5020 SALZBURG  
TEL: +43 (0)662 6196-0  
FAX: +43 (0)662 6196-1449  
E-Mail: maco@maco.at  
www.maco.at

MACO-BESCHLÄGE GMBH  
HAIDHOF 3  
D-94508 SCHÖLLNACH  
TEL: +49 (0)9903 9323-0  
FAX: +49 (0)9903 9323-5099  
E-Mail: d-maco@maco.de  
www.maco.de

Order no. 750495  
Creation date:  
October 2008  
All rights reserved  
and subject  
to change.