



*ALUMINIUM-TIMBER WINDOWS
SYSTEMS AS 9/11*

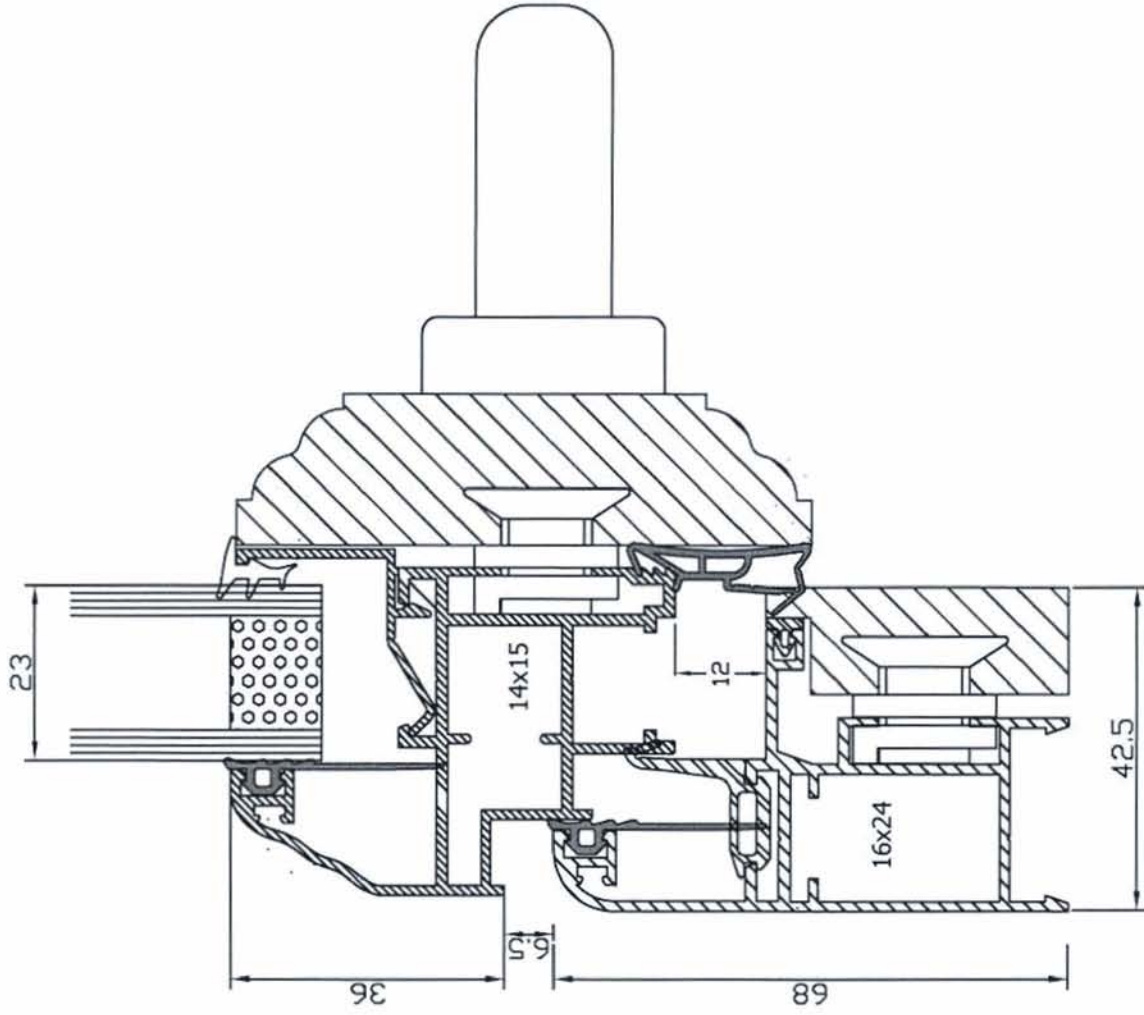


CATALOGUE 2006

TECHNICAL DRAWINGS AND
INSTALLATION SOLUTION



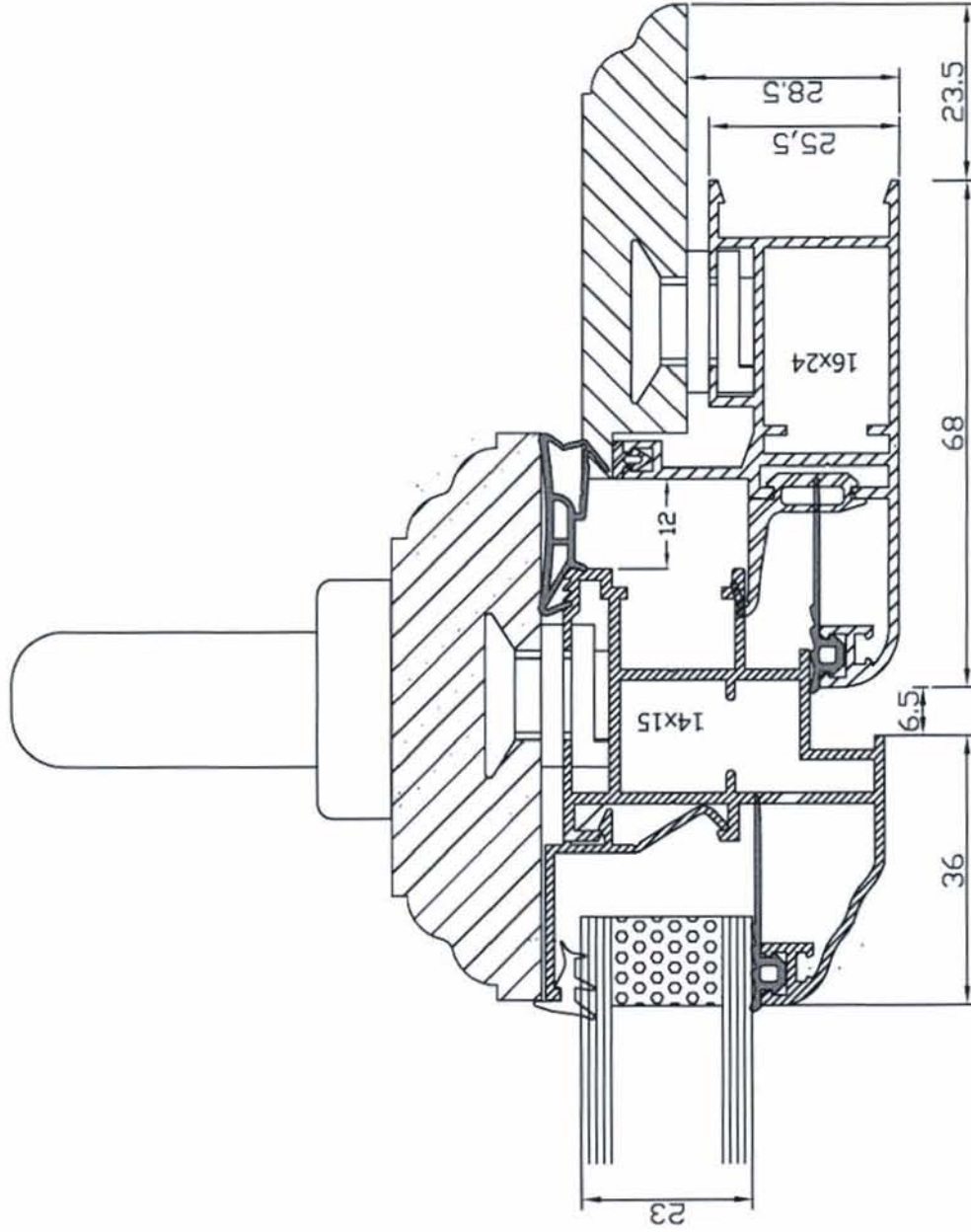
A2.1, 63-85 Turner St
 Port Melbourne VIC 3207
 Phone: (03) 9681 7300
 Fax: (03) 9681 7492
 office@qualital.com.au
 www.qualital.com.au



Codice	Serie	Scala	Data	Tolleranze	Edizione	Progettista
NODO LATERALE "L"	AS 9	1:1	10.08.2005	UNI 3879	1.0	Salvatore Pezzulo



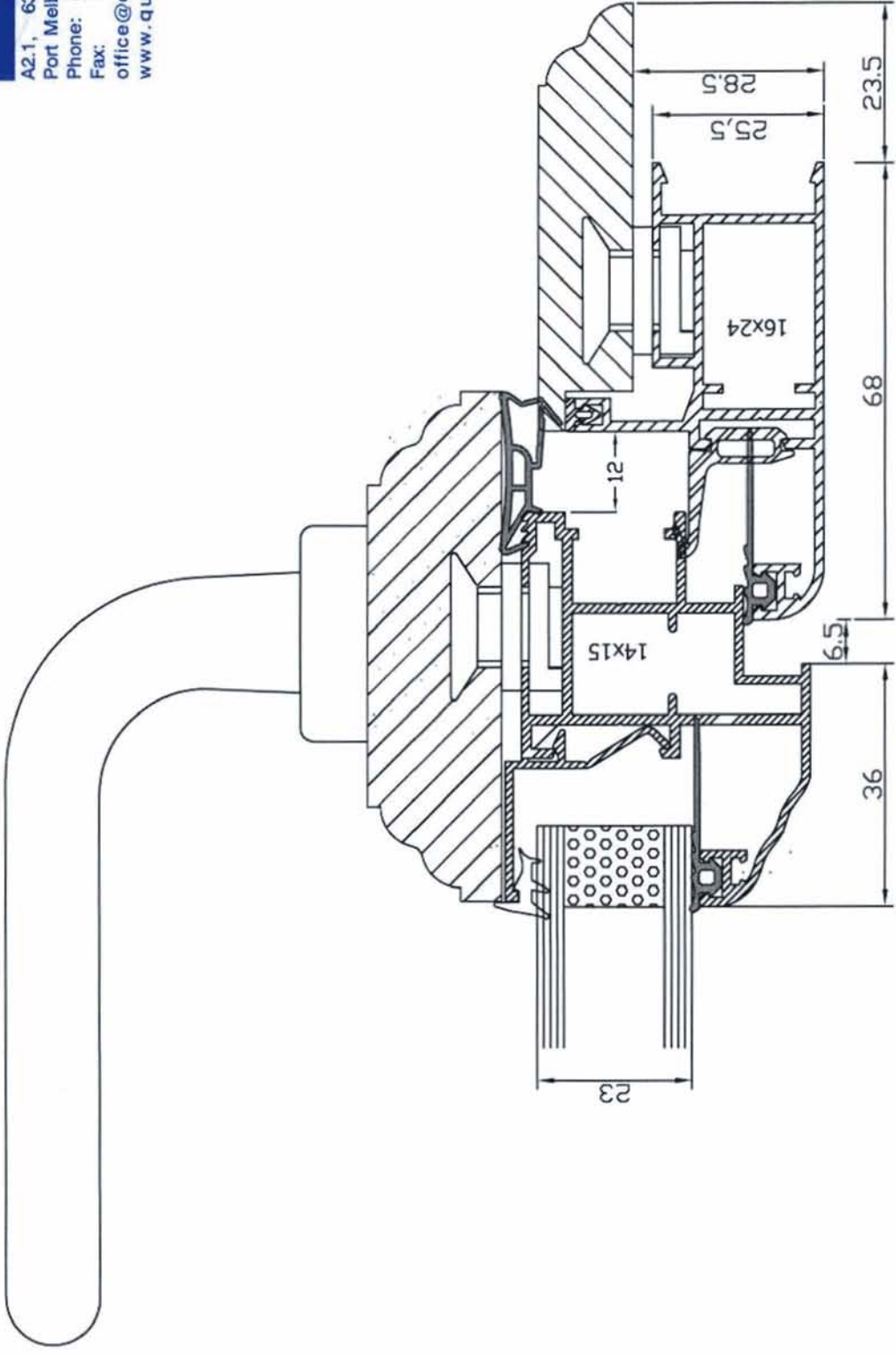
A2.1, 63-85 Turner St
 Port Melbourne VIC 3207
 Phone: (03) 9681 7300
 Fax: (03) 9681 7492
 office@qualital.com.au
 www.qualital.com.au



Codice	Serie	Scala	Data	Tolleranze	Edizione	Progettista
NODD LATERALE "Z"	AS 9	1:1	10.08.2005	UNI 3879	1.0	Salvatore Pezzulo



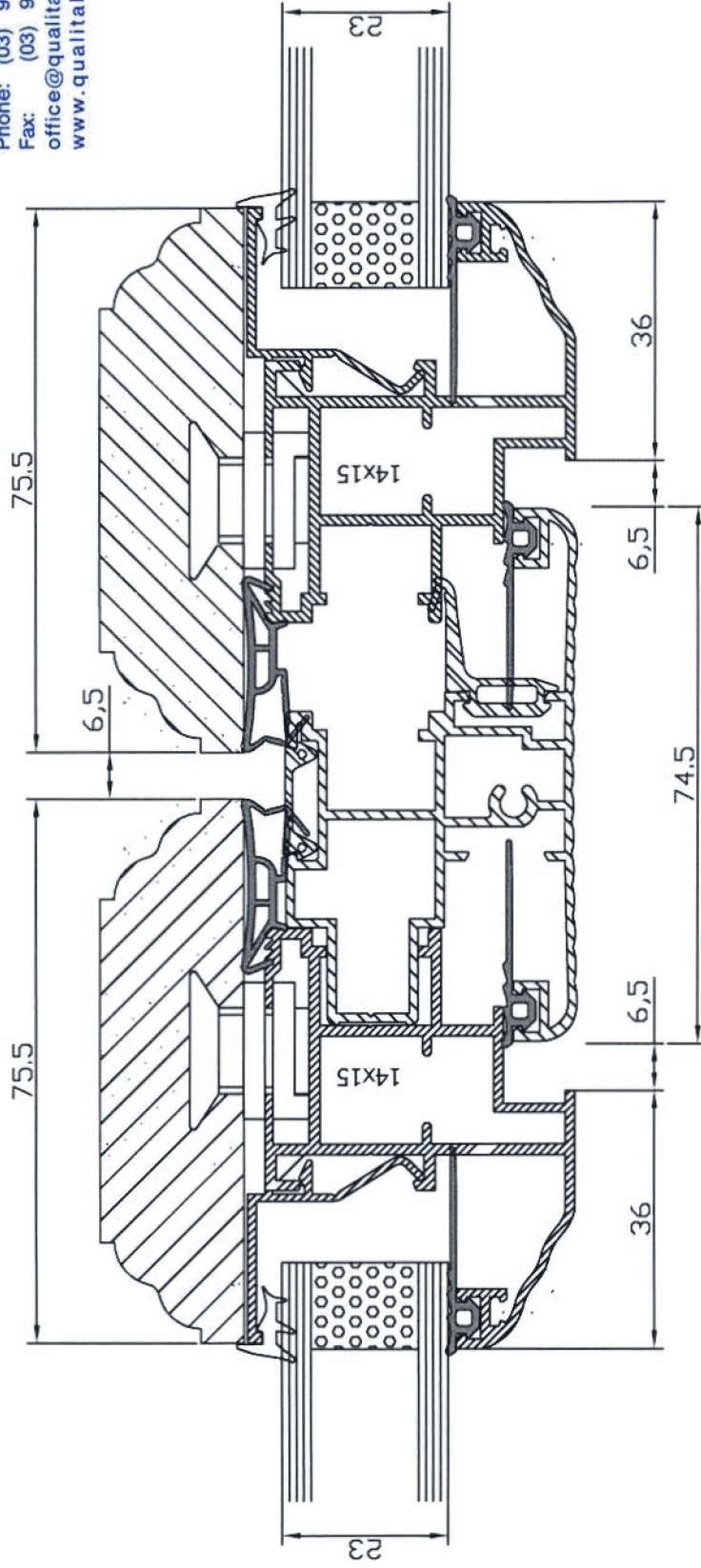
A2.1, 63-85 Turner St
 Port Melbourne VIC 3207
 Phone: (03) 9681 7300
 Fax: (03) 9681 7492
 office@qualital.com.au
 www.qualital.com.au



Codice	Serie	Scala	Data	Tolleranze	Edizione	Progettista
NDDO LATERALE "L"	AS 9	1:1	10.08.2005	UNI 3879	1.0	Salvatore Pezzulo



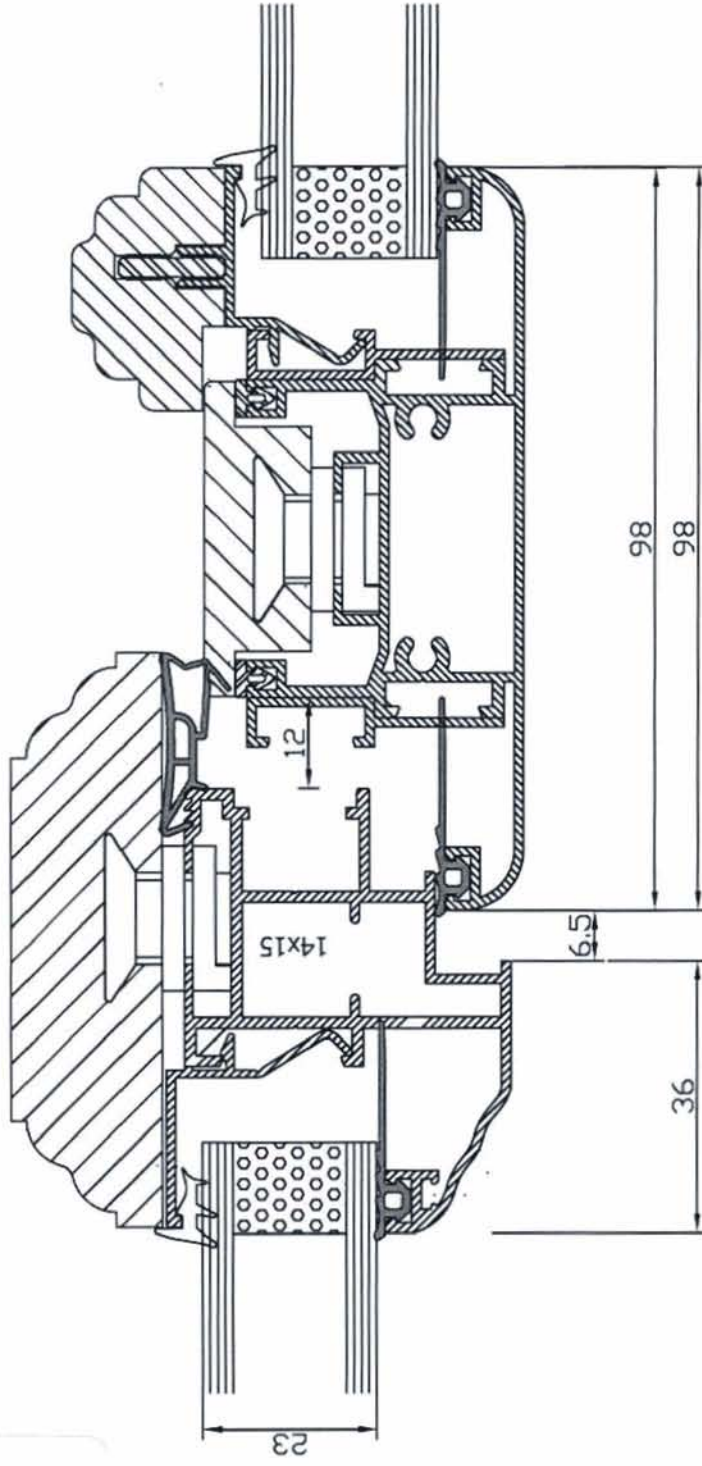
A2.1, 63-85 Turner St
 Port Melbourne VIC 3207
 Phone: (03) 9681 7300
 Fax: (03) 9681 7492
 office@qualital.com.au
 www.qualital.com.au



Codice	Serie	Scala	Data	Tolleranze	Edizione	Progettista
NDDO CENTRALE 2 ANTE	AS 9	1:1	10.08.2005	UNI 3879	1.0	Salvatore Pezzulo



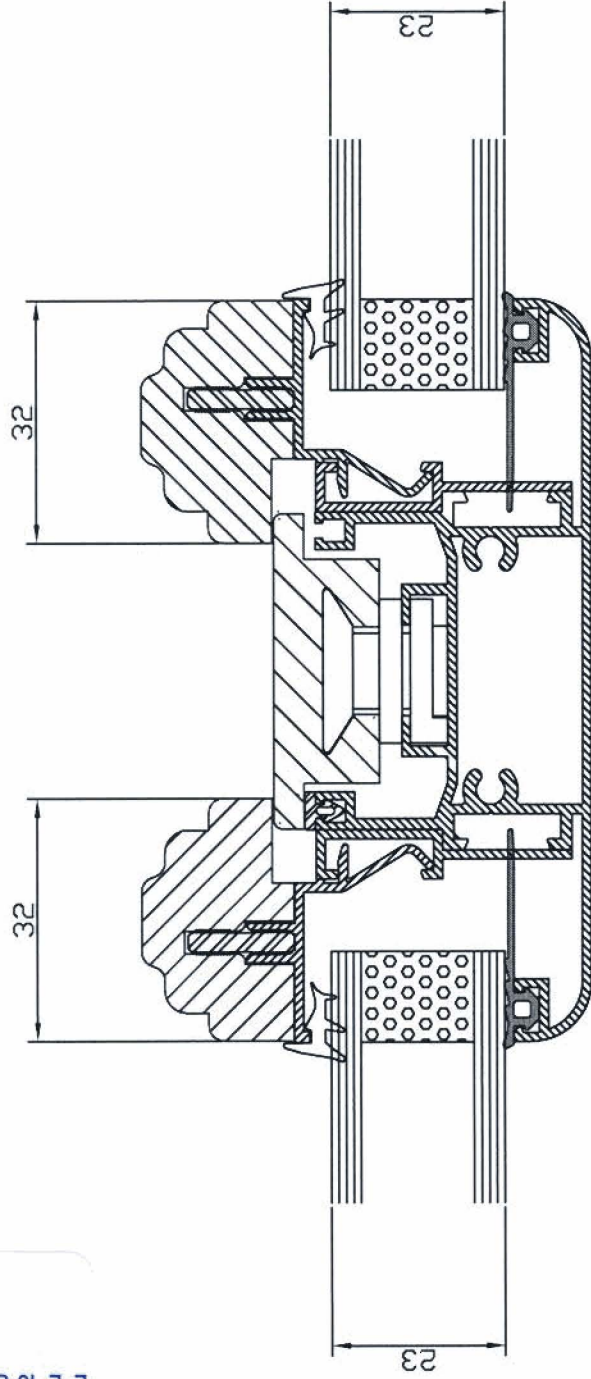
A2.1, 63-85 Turner St
Port Melbourne VIC 3207
Phone: (03) 9681 7300
Fax: (03) 9681 7492
office@qualital.com.au
www.qualital.com.au



Codice	Serie	Scala	Data	Tolleranze	Edizione	Progettista
TRAVERSO ANTA/FISSO	AS 9	1:1	10.08.2005	UNI 3879	1.0	Salvatore Pezzulo



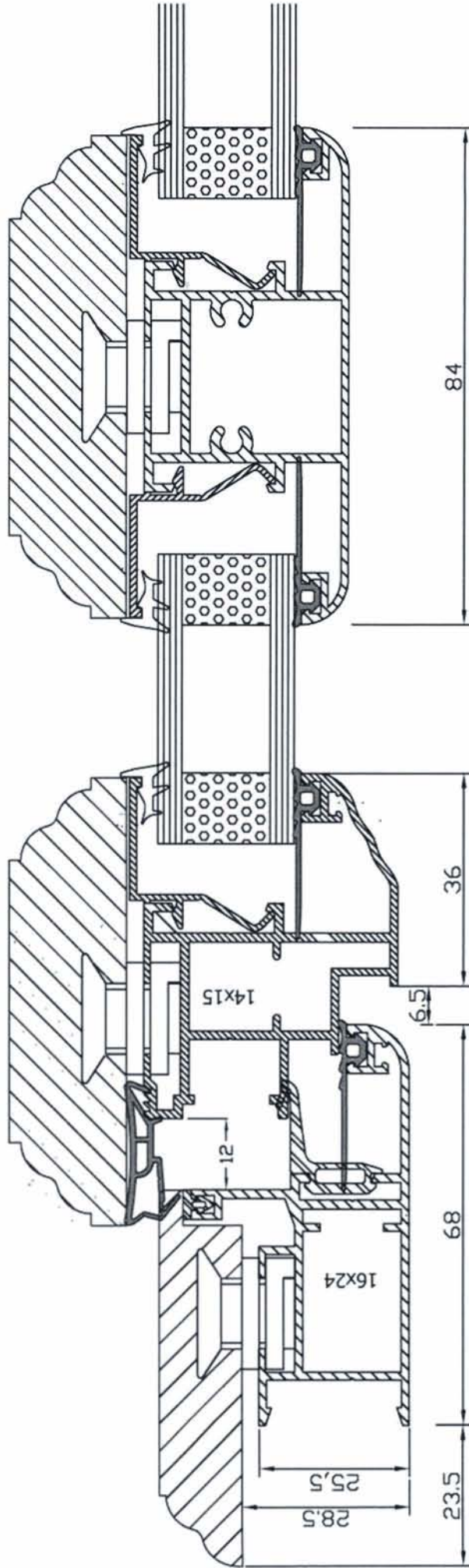
A2.1, 63-85 Turner St
Port Melbourne VIC 3207
Phone: (03) 9681 7300
Fax: (03) 9681 7492
office@qualital.com.au
www.qualital.com.au



Codice	Serie	Scala	Data	Tolleranze	Edizione	Progettista
NDDO TRAVERSO TELAID	AS 9	1:1	10.08.2005	UNI 3879	1.0	Salvatore Pezzuto



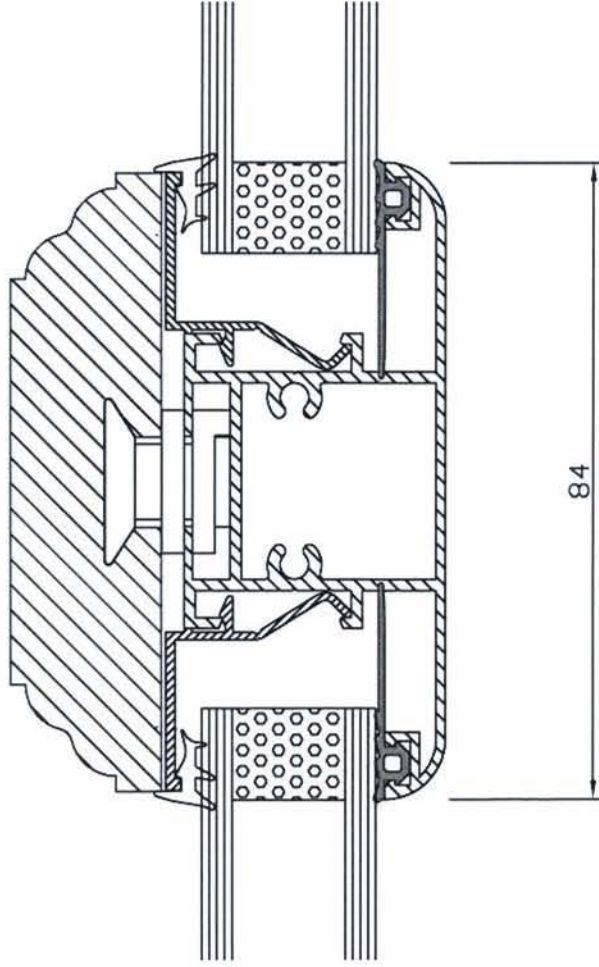
A2.1, 63-85 Turner St
 Port Melbourne VIC 3207
 Phone: (03) 9681 7300
 Fax: (03) 9681 7492
 office@qualital.com.au
 www.qualital.com.au



Codice	Serie	Scala	Data	Tolleranze	Edizione	Progettista
NDDO TRAVERSO ANTA	AS 9	1:1	10.08.2005	UNI 3879	1.0	Salvatore Pezzulo



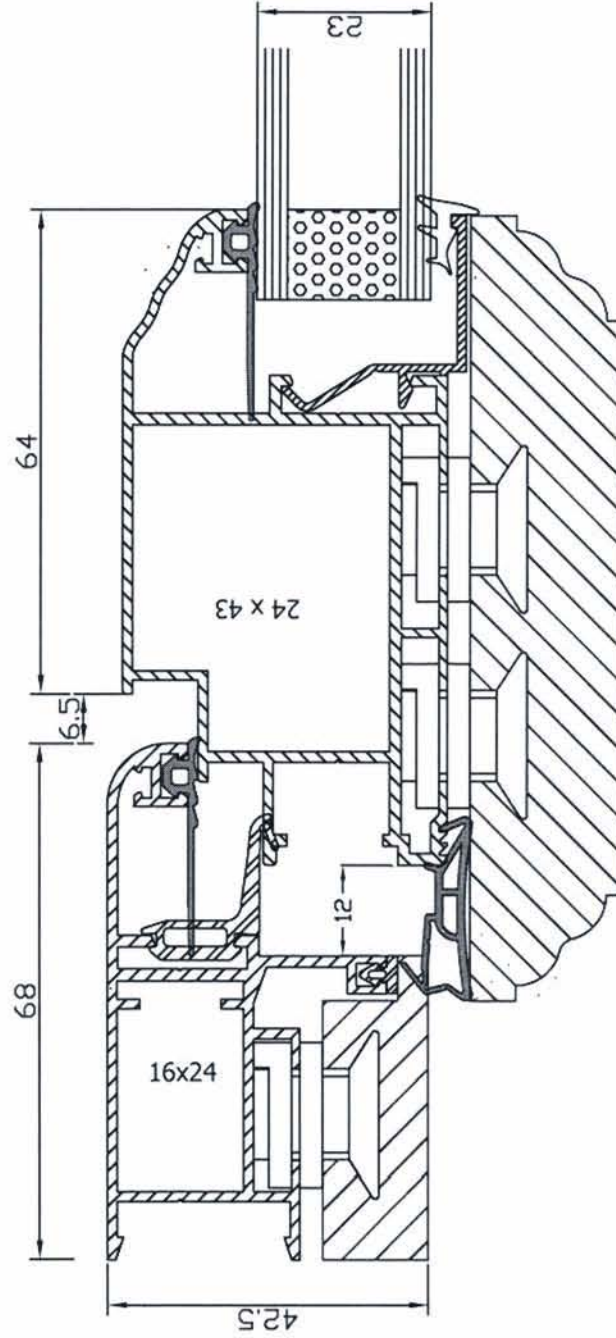
A2.1, 63-85 Turner St
Port Melbourne VIC 3207
Phone: (03) 9681 7300
Fax: (03) 9681 7492
office@qualital.com.au
www.qualital.com.au



Codice	Serie	Scala	Data	Tolleranze	Edizione	Progettista
TRAVERSO ANTA	AS 9	1:1	10.08.2005	UNI 3879	1.0	Salvatore Pezzulo



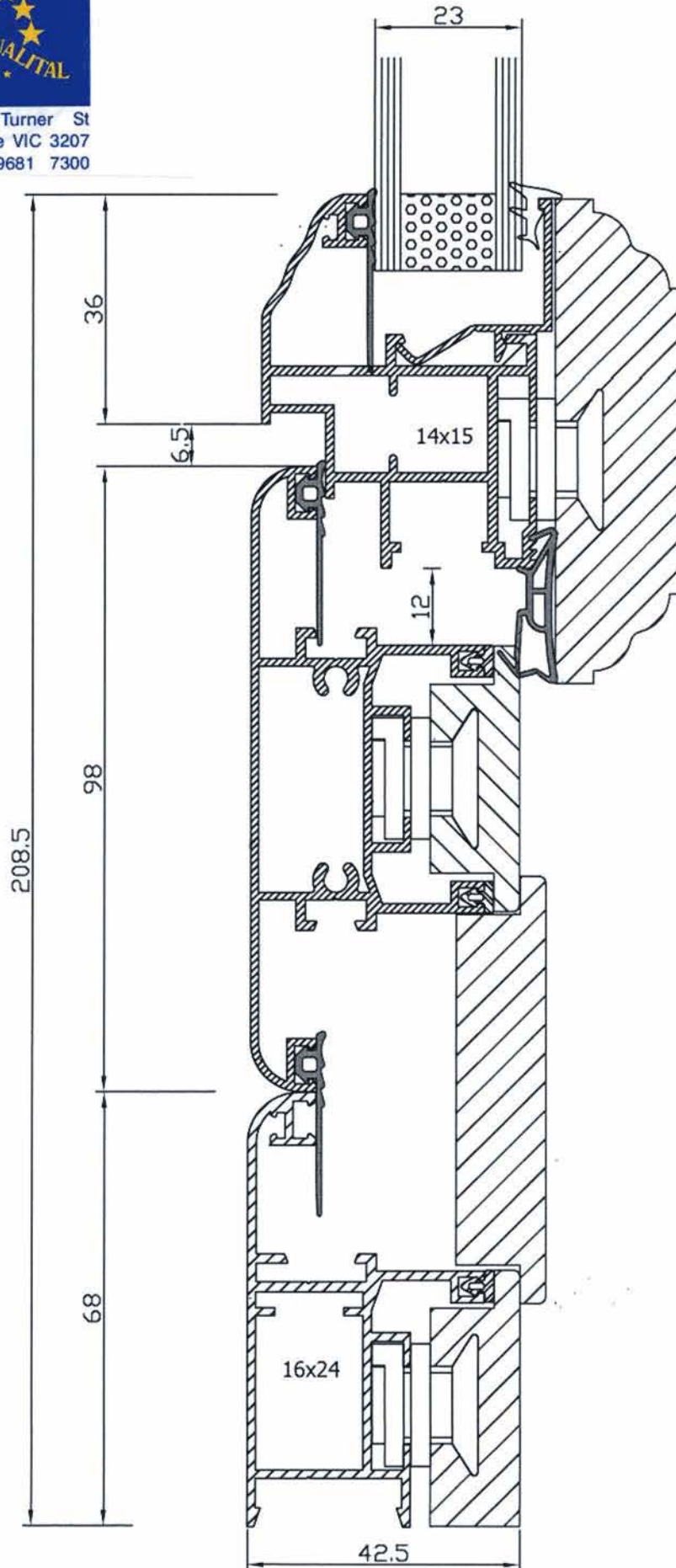
A2.1, 63-85 Turner St
 Port Melbourne VIC 3207
 Phone: (03) 9681 7300
 Fax: (03) 9681 7492
 office@qualital.com.au
 www.qualital.com.au



Codice	Serie	Scala	Data	Tolleranze	Edizione	Progettista
ANTA SERRATURA PORT.	AS 9	1:1	10.08.2005	UNI 3879	1.0	Salvatore Pezzulo



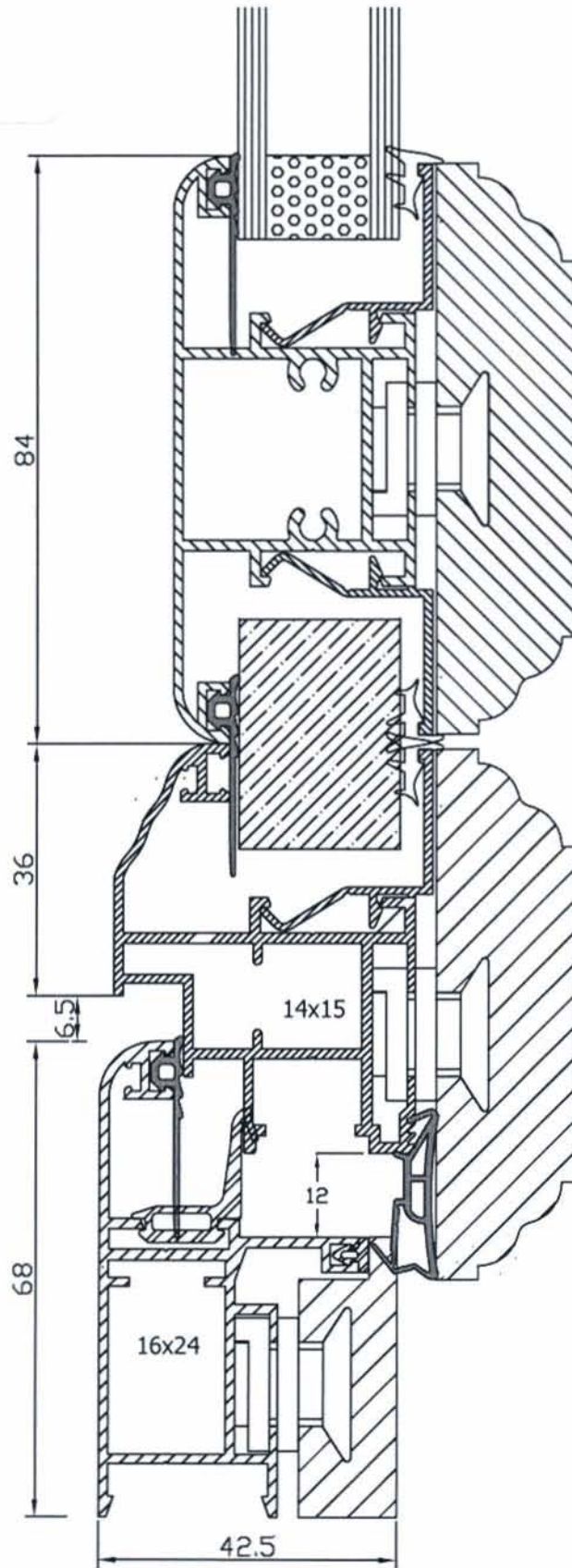
A2.1, 63-85 Turner St
Port Melbourne VIC 3207
Phone: (03) 9681 7300



Codice	Serie	Scala	Data	Tolleranze	Edizione	Progettista
ZOCCOLO RIPORTATO TELAIO	AS 9	1:1	10.08.05	UNI 3879	1.0	Salvatore Pezzulo



A2.1, 63-85 Turner St
Port Melbourne VIC 3207
Phone: (03) 9681 7300
Fax: (03) 9681 7492
office@qualital.com.au
www.qualital.com.au

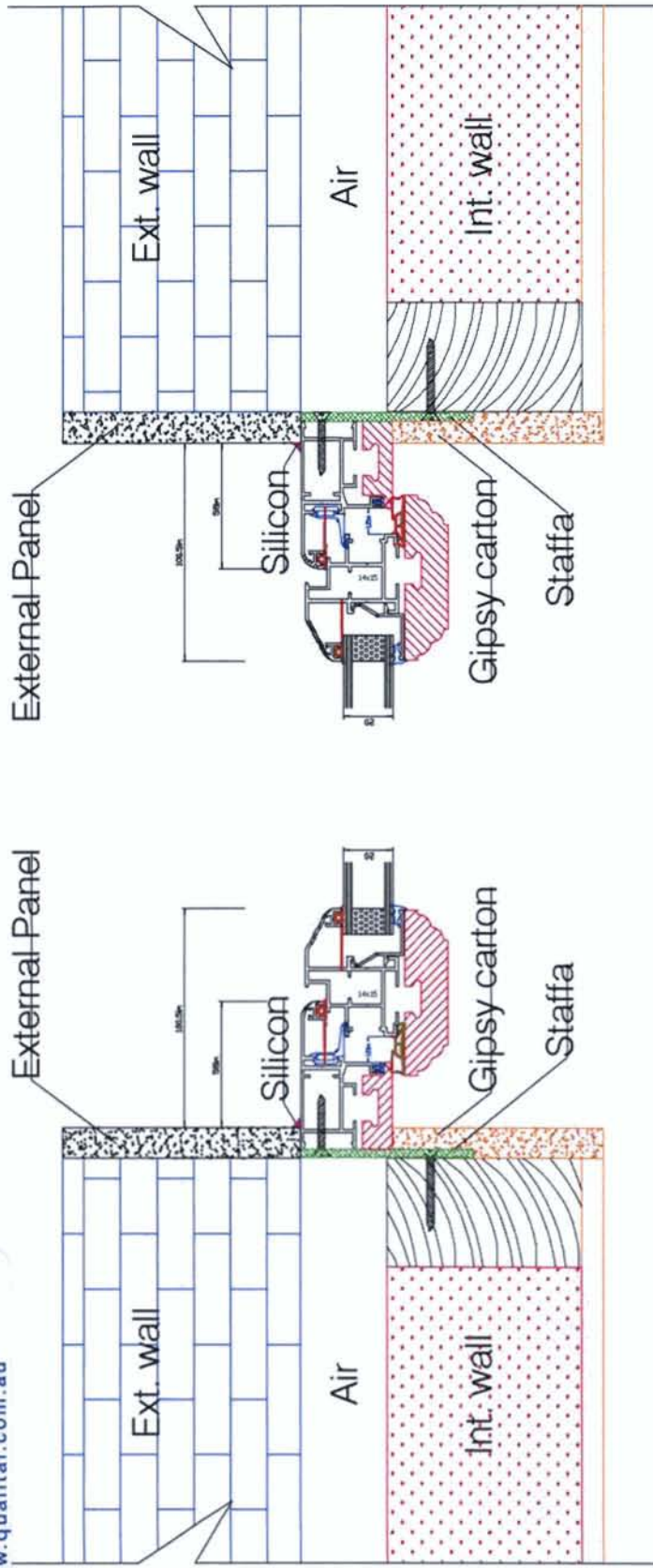


Codice	Serie	Scala	Data	Tolleranze	Edizione	Progettista
ZOCCOLO RIPORTATO ANTA	AS 9	1:1	10.08.05	UNI 3879	1.0	Salvatore Pezzulo



A2.1, 63-85 Turner St
 Port Melbourne VIC 3207
 Phone: (03) 9681 7300
 Fax: (03) 9681 7492
 office@qualital.com.au
 www.qualital.com.au

AS9 - 1st SOLUTION



Questo disegno è di proprietà ALFA LUM s.a., la riproduzione anche parziale è severamente vietata a norme di legge

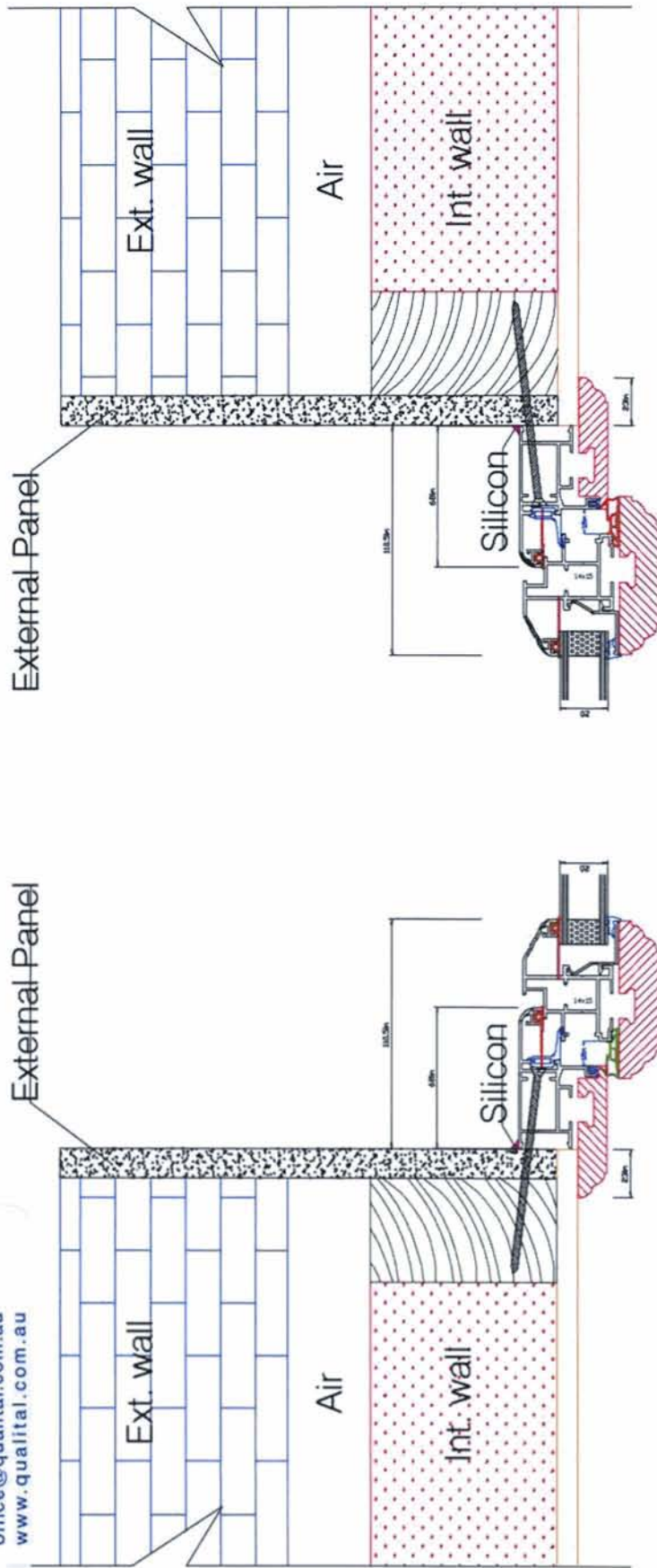
Scala	Data	CODICE	Edizione	Progettista
1:1	06.12.2006	AS 700	1.0	P.S.

SCHEMA DI MONTAGGIO IN "L"



A2.1, 63-85 Turner St
 Port Melbourne VIC 3207
 Phone: (03) 9681 7300
 Fax: (03) 9681 7492
 office@qualital.com.au
 www.qualital.com.au

AS 9 - 2 nd SOLUTION



Questo disegno è di proprietà ALFA LUM s.a., la riproduzione anche parziale è severamente vietata a norme di legge

SCHEMA DI MONTAGGIO IN "Z" BATTUTA 25mm

Scala
1:1

Data
06.12.2006

CODICE
AS 700

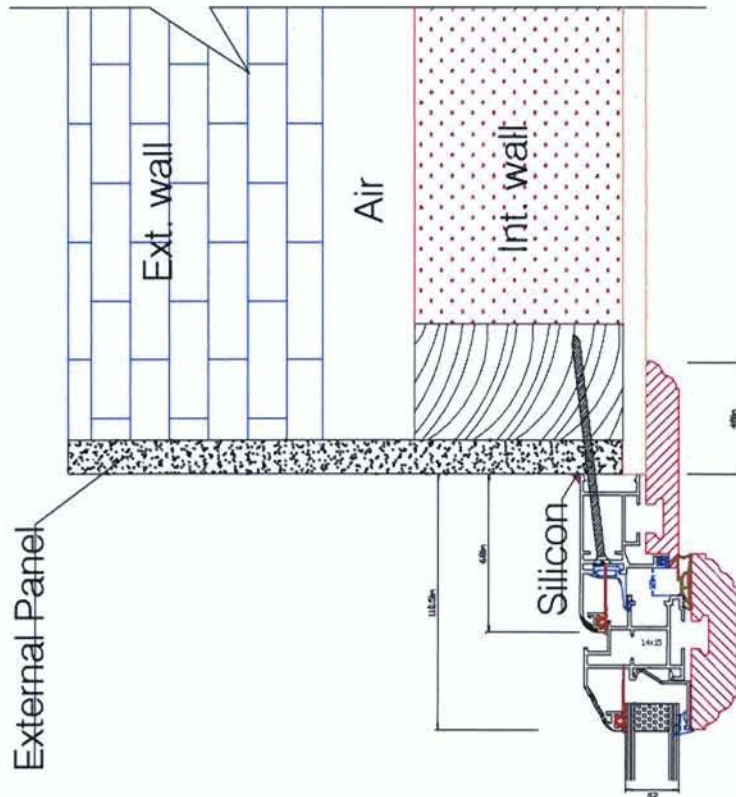
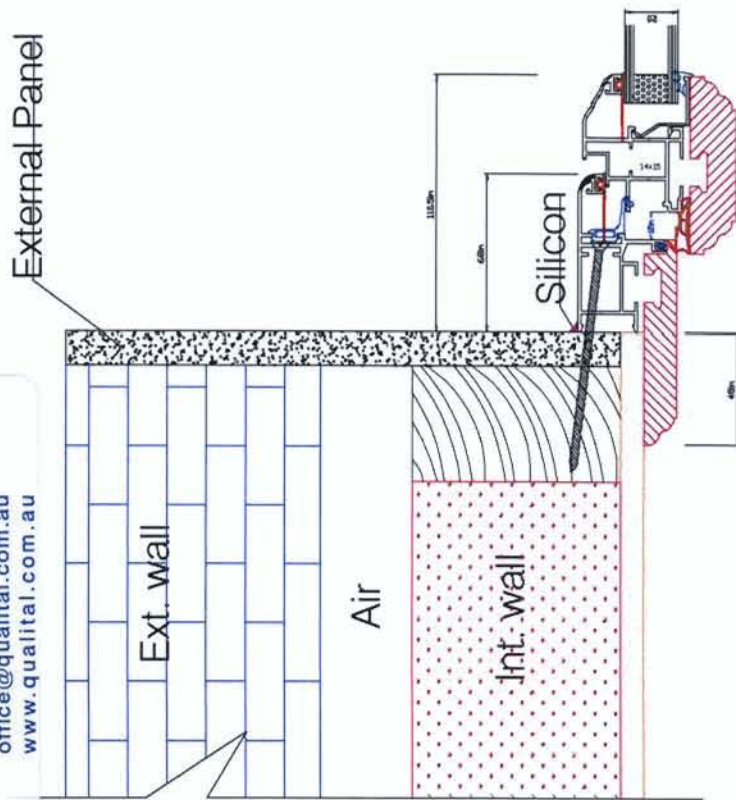
Edizione
1.0

Progettista
P.S.



A2.1, 63-85 Turner St
Port Melbourne VIC 3207
Phone: (03) 9681 7300
Fax: (03) 9681 7492
office@qualital.com.au
www.qualital.com.au

AS 9 - 3rd SOLUTION



Questo disegno è di proprietà ALFA LUM s.a., la riproduzione anche parziale è severamente vietata a norme di legge

SCHEMA DI MONTAGGIO IN "Z" BATTUTA 50mm

Scala
1:1

Data
06.12.2006

CODICE
AS 700

Edizione
1.0

Progettista
P.S.